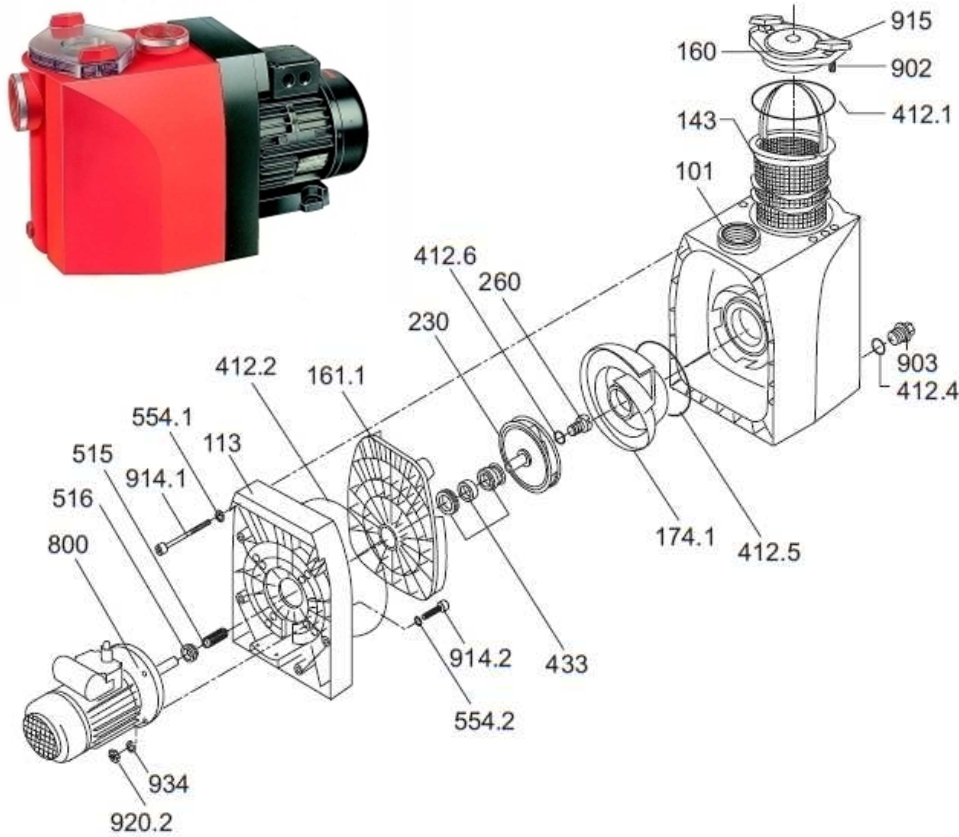
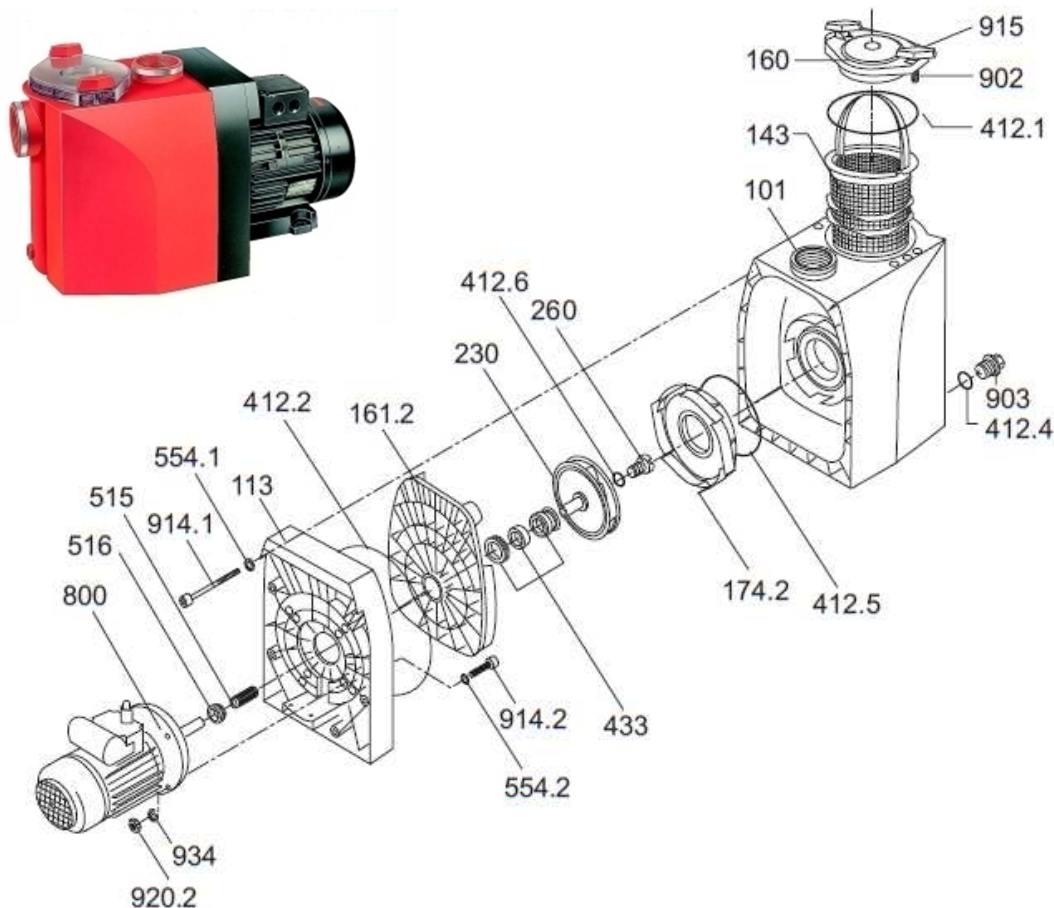
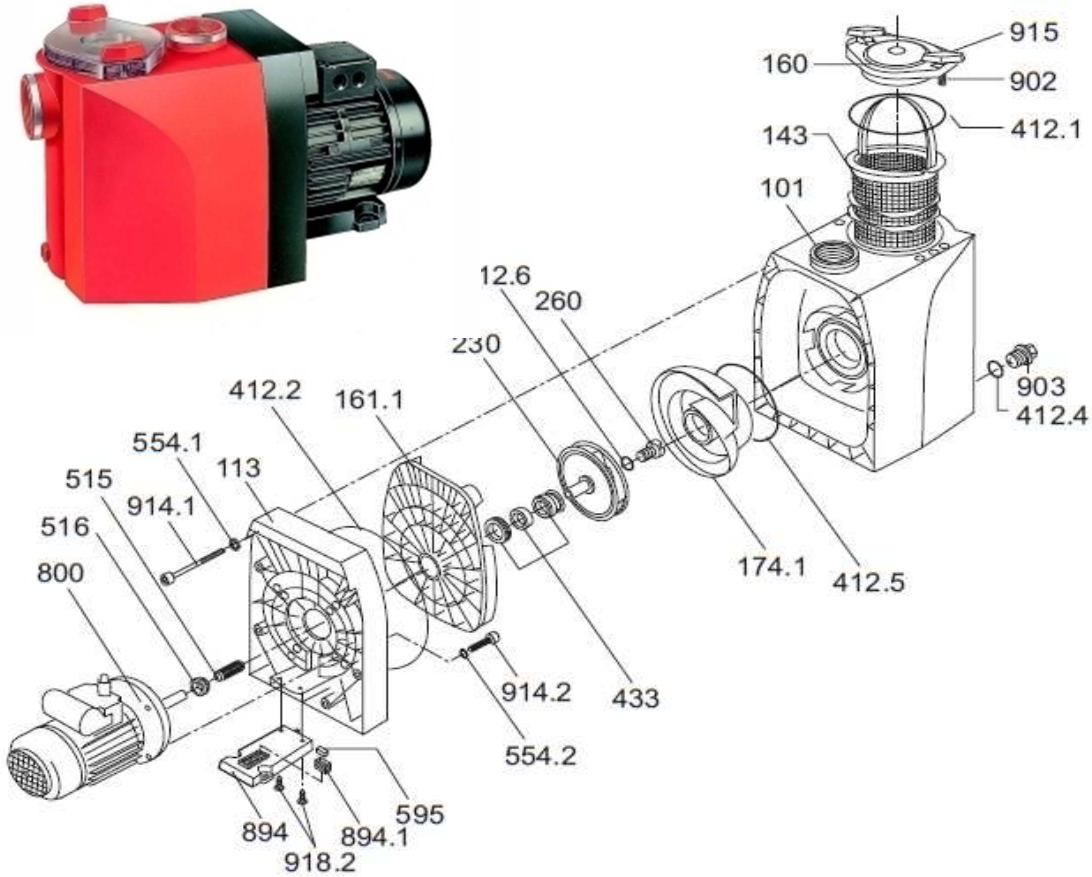


BADU® 40/6 + 40/9


Nr części BADU 40/6 + 40/9	Ilość	Art.nr	Cena katalogowa netto w EURO
101 pomarańcz	1	2920.110.100	161,35
101 czarna	1	2920.110.102	161,35
113	1	2920.111.300	32,11
143	1	2920.114.300	6,26
160 śruby pomarańcz	1	2920.116.002	29,23
160 śruby czarne	1	2920.116.012	29,23
161.1	1	2920.116.100	17,42
174.1	1	2920.115.500	11,52
230 do BADU 40/6	1	2920.123.000	31,46
230 do BADU 40/9	1	2920.223.000	32,26
260	1	2920.126.000	0,55
412.1	1	2920.141.210	1,73
412.2	1	2920.141.220	3,02
412.4	1	2302.002.062	0,33
412.5	1	2920.141.250	1,31
412.6	1	2920.141.261	0,59
433	1	2920.143.310	25,42
515	2	2920.151.510	1,94
516 V 16 S, do BADU 40/6 prod.od '76 i 40/9 prod.od 1/87	1	2920.151.600	1,28
516 V 18 S, do BADU 40/9 prod.do 12/86	1	2920.251.600	1,41
554.1	8	5871.250.601	0,07
554.2	4	5871.250.802	0,33
800 zasilanie 230V			0,00
0,30 kW, do BADU 40/6 230V.	1	2040.066.038	372,96
0,45 kW, do BADU 40/9 230V.	1	2040.096.038	401,76
800 zasilanie 400V			
0,30 kW, do BADU 40/6 , 400V	1	2040.066.037	358,56
0,45 kW, do BADU 40/9 , 400V	1	2040.096.037	378,72
902	2	2920.190.201	4,97
903	1	2920.191.200	1,41
914.1	8	2920.191.000	0,82
914.2	4	5879.120.835	0,68
914.2	4	5879.120.825	0,56
915 pomarańcz	2	2920.191.500	4,54
915 czarny	2	2920.191.501	4,54
920.2	4	5819.340.800	0,09
934	4	5871.270.800	0,12
zestaw uszczelek		2920.141.299	6,91

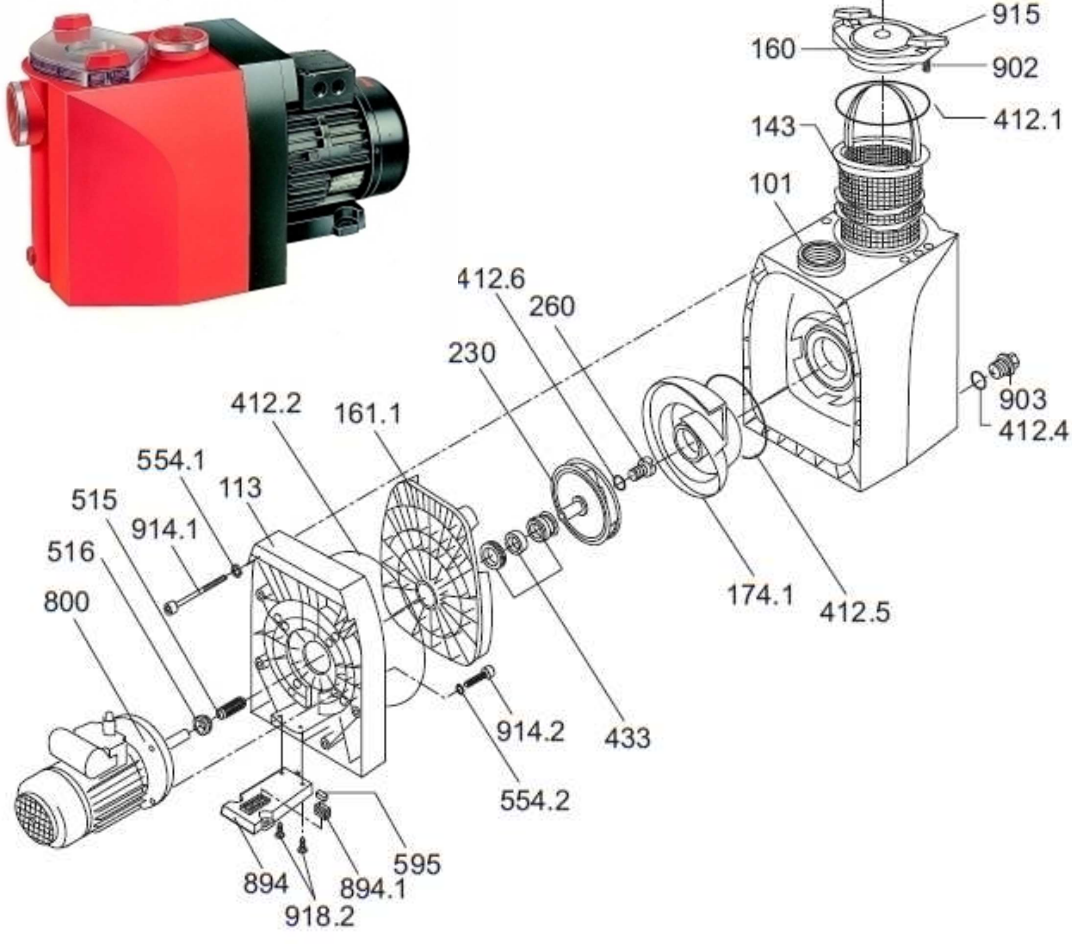


Nr części BADU 40/7 i 40/11	Ilość	Art.nr	Cena katalogowa netto w EURO
101 pomarańcz		2920.110.100	161,35
101 czarny		2920.110.102	161,35
113	1	2920.111.300	32,11
143	1	2920.114.300	6,26
160 śruby pomarańcz	1	2920.116.002	29,23
160 śruby czarne	1	2920.116.012	29,23
161.2	1	2920.116.120	17,06
174.2	1	2920.117.420	12,38
230 , d=112 mm, b=4,5 mm, für BADU 40/7	1	2920.123.002	32,47
230 , d=112 mm, b=6,5 mm, für BADU 40/11	1	2920.223.002	33,41
260	1	2920.126.000	0,55
412.1	1	2920.141.210	1,73
412.2	1	2920.141.220	3,02
412.4	1	2302.002.062	0,33
412.5	1	2920.141.252	0,82
412.6	1	2920.141.261	0,59
433	1	2920.143.310	25,42
515	2	2920.151.510	1,94
516	1	2920.151.600	1,28
554.1	8	5871.250.601	0,07
554.2	4	5871.250.802	0,33
800 zasilanie 230V	1		0,00
0,30 kW, do BADU 40/7 ,230V		2040.066.038	372,96
0,45 kW, do BADU 40/11 ,230V		2040.096.038	401,76
800 zasilanie 400V			0,00
0,30 kW, do BADU 40/7 ,230V		2040.066.037	358,56
0,45 kW, do BADU 40/11,230V		2040.096.037	378,72
902	2	2920.190.201	4,97
903	1	2920.191.200	1,41
914.1	8	2920.191.000	0,82
914.2 (prod.do 12/94)	4	5879.120.835	0,68
914.2 (prod.od 1/95)	4	5879.120.825	0,56
915 śruby pomarańcz230V	2	2920.191.500	4,54
915 śruby czarne		2920.191.501	4,54
920.2	4	5819.340.800	0,09
934	4	5871.270.800	0,12
zestaw uszczeltek		2920.141.298	6,41



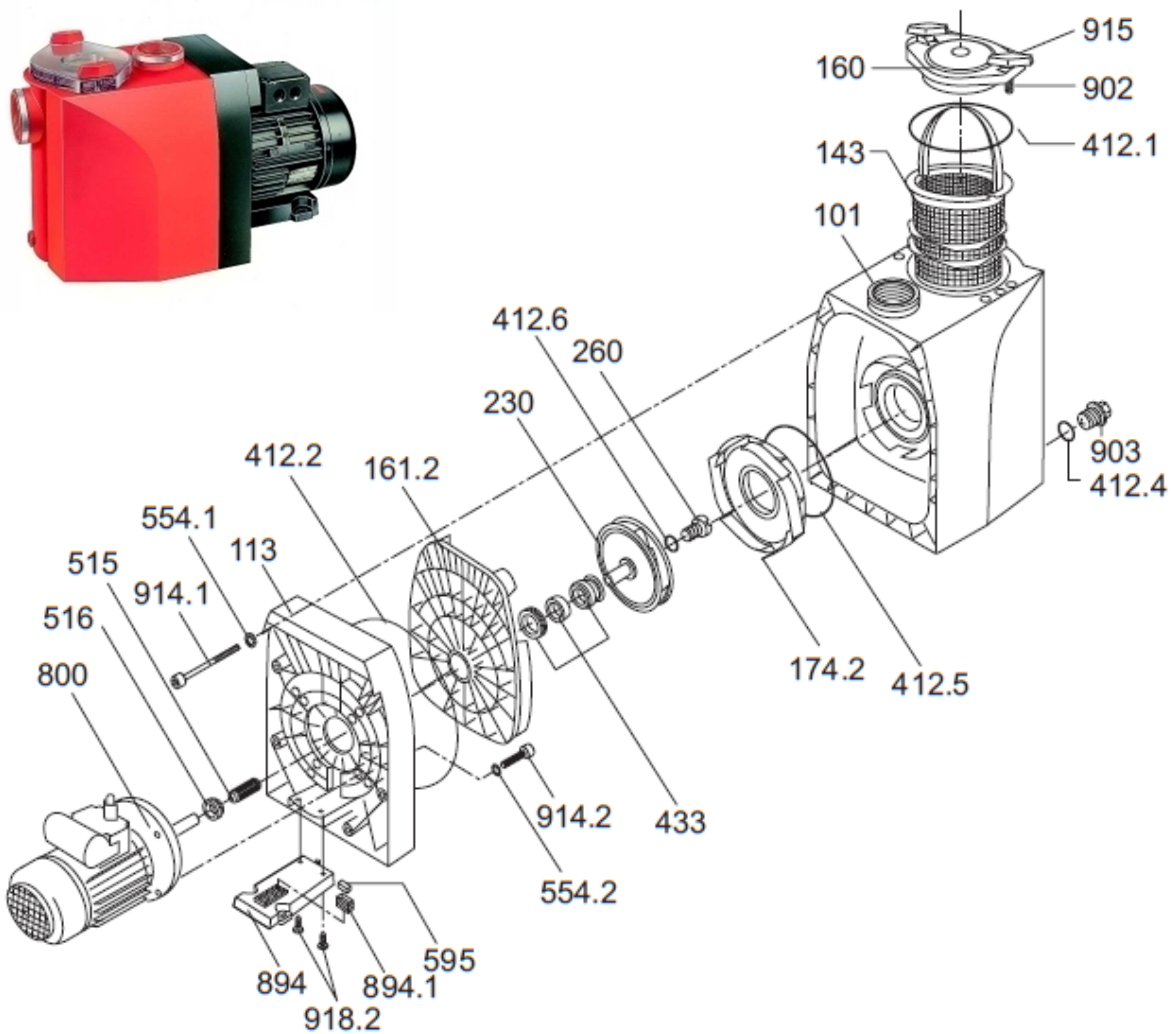
Nr części BADU 40/10, 40/13 G, 40/16 , 40/18 G 40/22, 40/25 G	Ilość	Art.nr	Cena katalogowa netto w EURO
101 , pomarańcz do BADU 40/10, 40/13 G,40/16 i 40/18 G	1	2920.310.100	190,44
101 , czarna do BADU 40/10,40/13 G, 40/16 i 40/18 G	1	2920.310.102	190,44
101, pomarańcz do BADU 40/22, 40/25 G i 40/32	1	2920.510.100	190,44
101, czarna do BADU 40/22, 40/25 G i 40/32	1	2920.510.102	190,44
113	1	2920.311.300	60,91
143	1	2920.314.300	10,80
160 śruby pomarańczo230V	1	2920.316.002	45,07
160 śruby czarne	1	2920.316.012	45,07
161.1	1	2920.316.100	46,94
174.1	1	2920.315.500	39,10
230 , do BADU 40/10 i 40/13 G (zawiera części 260 + 412.6)	1	2920.323.000	44,64
230 , do BADU 40/16 und 40/18 G (zawiera części 260 + 412.6)	1	2920.423.000	46,30
230 , do BADU 40/22 und 40/25 G (zawiera części 260 + 412.6)	1	2920.523.000	50,62
230 , do BADU 40/32	1	2920.623.000	62,06
260 , do BADU 40/13 G, 40/18 G i 40/25 G	1	2920.326.000	1,44
260 , do BADU 40/10, 40/16, 40/22 i 40/32	1	2920.326.001	3,67
412.1	1	2920.341.210	2,52
412.2	1	2920.341.220	3,38
412.4	1	2302.002.062	0,33
412.5	1	2920.141.210	1,73
412.6	1	2920.141.241	1,02
433	1	2920.343.310	32,04
515, do BADU 40/10, 40/13 G, 40/16, 40/18 G, 40/22 i 40/25 G	1	2920.351.510	2,95
515 , do BADU 40/32	2	2920.651.510	2,45
516 ,do BADU 40/10, 40/13 G, 40/16(400V) i 40/18 G (400V)	1	2920.251.600	1,41
516 , do BADU 40/16 (230), 40/18 G (230V),40/22, 40/25 G i 40/32	1	2921.151.600	1,58
554.1	8	5871.250.802	0,33
554.2	4	5871.250.802	0,33
595	1	2920.359.501	0,75

**BADU[®] 40/10, 40/13 G, 40/16, 40/18 G,
40/22, 40/25 G + 40/32**



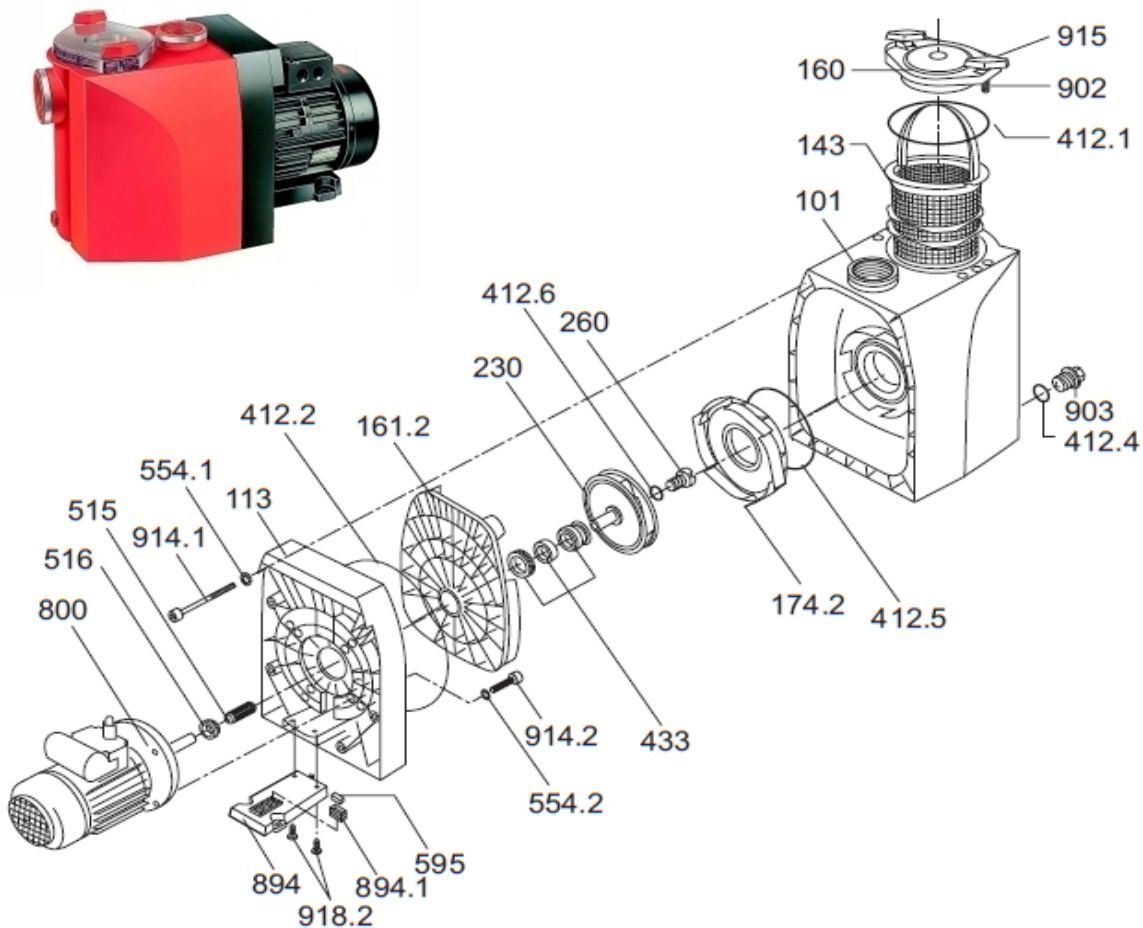
Nr części BADU 40/10, 40/13 G, 40/16 , 40/18 G 40/22, 40/25 G	Ilość	Art.nr	Cena katalogowa netto w EURO
800 , zasilanie 400V			
0,75 kW, do BADU 40/10 i 40/13 G	1	2040.106.037	421,92
1,00 kW, do BADU 40/16 i 40/18 G	1	2040.166.037	429,12
1,30 kW, do BADU 40/22 i 40/25 G	1	2040.226.037	502,56
1,50 kW, do BADU 40/32	1	2040.326.037	637,92
894	1	2920.389.400	7,56
894.1	1	2920.389.410	0,37
902	2	2920.190.201	4,97
903	1	2920.191.200	1,41
914.1	8	5819.120.893	2,95
914.2	4	5879.120.825	0,56
915 śruby pomarańczowo	2	2920.191.500	4,54
915 śruby czarne	2	2920.191.501	4,54
918.2	2	5879.816.316	0,49
zestaw uszczelek		2920.341.299	9,00

BADU® 40/15, 40/19, 40/23 + 40/26



Nr części BADU 40/15, 40/19, 40/23 i 40/26	Ilość	Art.nr	Cena katalogowa netto w EURO
101 , pomarańcz do BADU 40/15 i 40/19	1	2920.310.100	190,44
101 , czarny do BADU 40/15 i 40/19	1	2920.310.102	190,44
101 , pomarańcz do BADU 40/23 i 40/26	1	2920.510.100	190,44
101 , czarny do BADU 40/23 i 40/26	1	2920.510.102	190,44
113	1	2920.311.300	60,91
143	1	2920.314.300	10,80
160 śruby pomarańczo230V	1	2920.316.002	45,07
160 śruby czarne	1	2920.316.012	45,07
161.2	1	2920.316.110	25,99
174.2		2920.317.410	25,42
230 , do BADU 40/15		2920.323.029	55,66
230 , do BADU 40/19		2920.323.039	60,91
230 , do BADU 40/23		2920.323.049	60,91
230 , do BADU 40/26		2920.323.059	60,91
260	1	2920.326.001	3,67
412.1	1	2920.341.210	2,52
412.2	1	2920.341.220	3,38
412.4	1	2302.002.062	0,33
412.5	1	2920.141.210	1,73
412.6	1	2920.141.241	1,02
433	1	2920.343.310	32,04
515 , 12 x 18 mm, do BADU 40/15, 40/19 i 40/23	1	2920.351.510	2,95
515 , 12 x 14 mm, do BADU 40/26	2	2920.651.510	2,45

BADU® 40/15, 40/19, 40/23 + 40/26



Nr części BADU 40/15 , 40/19, 40/23 i 40/26	Ilość	Art.nr	Cena katalogowa netto w EURO
516 , V 18 S, do BADU 40/15 i 40/19	1	2920.251.600	1,41
516 ,V 20 S, do BADU 40/19, 40/23 i 40/26	1	2921.151.600	1,58
554.1	8	5871.250.802	0,33
554.2	4	5871.250.802	0,33
595	1	2920.359.501	0,75
800 , zasilanie 230V			0,00
0,75 kW, do BADU 40/15	1	2040.106.038	449,28
1,00 kW, do BADU 40/19	1	2040.166.038	476,64
1,30 kW, do BADU 40/23	1	2040.226.038	529,92
1,50 kW, do BADU 40/26	1	2040.326.038	745,92
800 , zasilanie 400V			0,00
0,75 kW, do BADU 40/15	1	2040.106.037	421,92
1,00 kW, do BADU 40/19	1	2040.166.037	429,12
1,30 kW, do BADU 40/23	1	2040.226.037	502,56
1,50 kW, do BADU 40/26	1	2040.326.037	637,92
894	1	2920.389.400	7,56
894.1	1	2920.389.410	0,37
902	2	2920.190.201	4,97
903	1	2920.191.200	1,41
914.1	8	5819.120.893	2,95
914.2	4	5879.120.825	0,56
915 śruby pomarańczo230V	2	2920.191.500	4,54
915 śruby czarne	2	2920.191.501	4,54
918.2	2	5879.816.316	0,49
zestaw uszczelek		2920.341.299	9,00